



Hewlett Packard
Enterprise

HCI - SimpliVity

Daniel Chen
HPE Taiwan





Agenda

- Hybrid IT
- Why HPE SimpliVity
 - Management
 - Data efficiency
 - Resiliency and Reliability
 - Roadmap

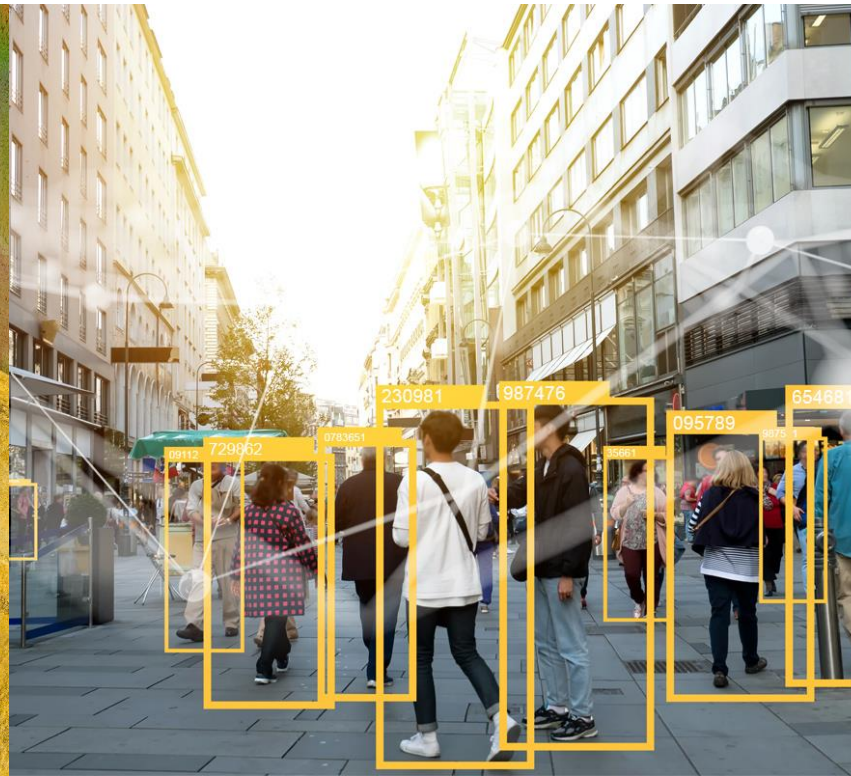


Hybrid IT

We live in a world where everything computes



Technology will be embedded
everywhere

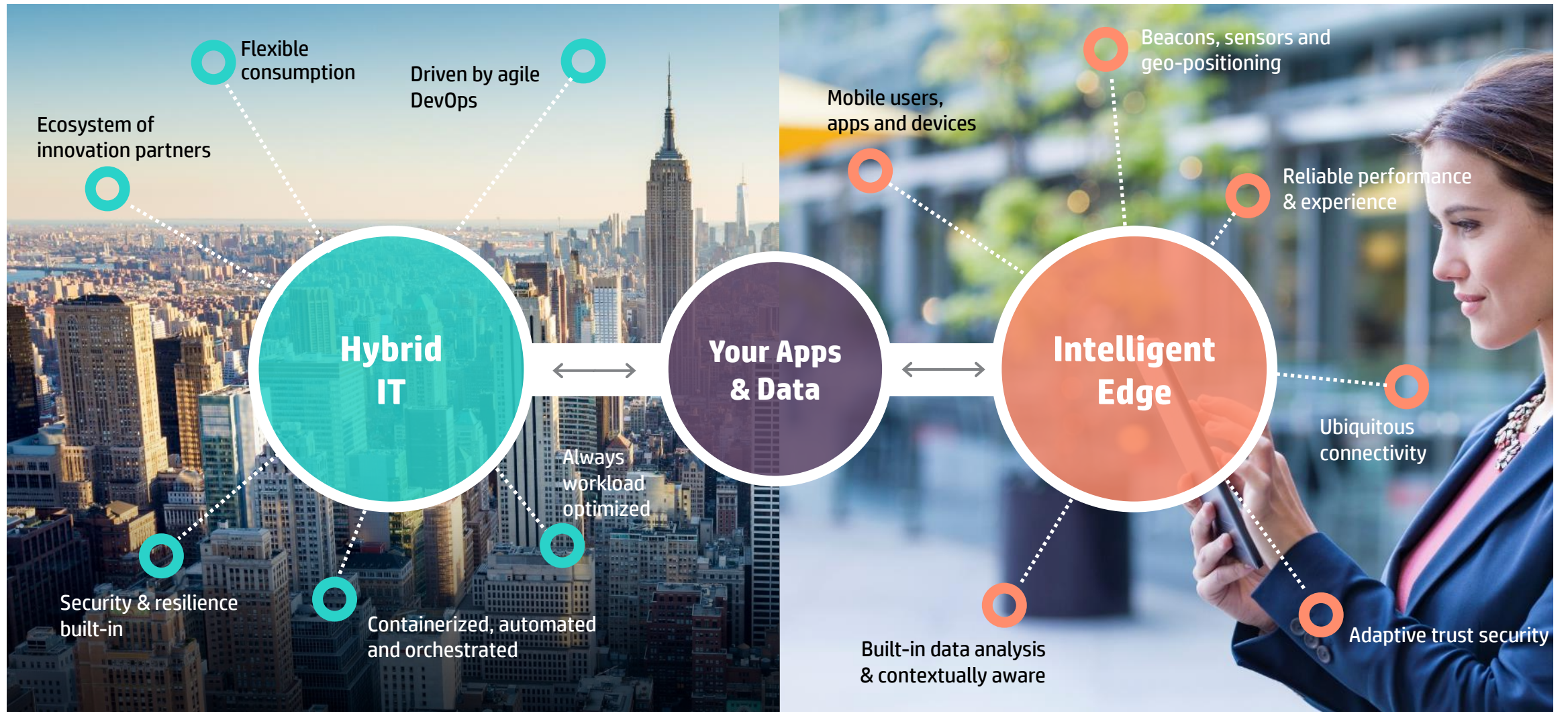


Everyone and everything
will be connected
– and learning



Everything
will be understood

Accelerating time to value in a hybrid world is priority #1



HPE makes Hybrid IT simple with Software-Defined Infrastructure

Simplify virtual apps and data - accelerate app performance, speed business continuity, lower costs and achieve an enterprise cloud in minutes

4.5X

Better application performance
than traditional IT

<1

Minute to backup
and restore a 1TB VM -
Guaranteed

69%

Cost savings compared
to traditional IT and up to
55% compared to public cloud



HPE Simplifies Applications and Data with HPE SimpliVity

Fast



Innovative VM-centric management and mobility speed deployment and app performance to free IT to focus on their business

- **81% time** freed to focus on apps
- Effectively run **all virtualized workloads**
 - SQL Server, VDI, Collaboration, DevOps, Docker
- **50%+ app performance** improvement

Efficient



Built-in enterprise data services protect your data, speed business continuity and increase storage efficiency – guaranteed!

- **Under 1 minute** to backup or restore a 1 TB VM
- **Save 90%** capacity across storage and backup combined
- **Reduce costs** by 69%*

Multi-Cloud



Transform your VM environment into an enterprise cloud that delivers cloud-like speed, operations and economics across all your clouds.

- Build clouds and deploy apps in minutes with **a few clicks**
- **Any cloud** Google, AWS, Azure, Cloud 28+

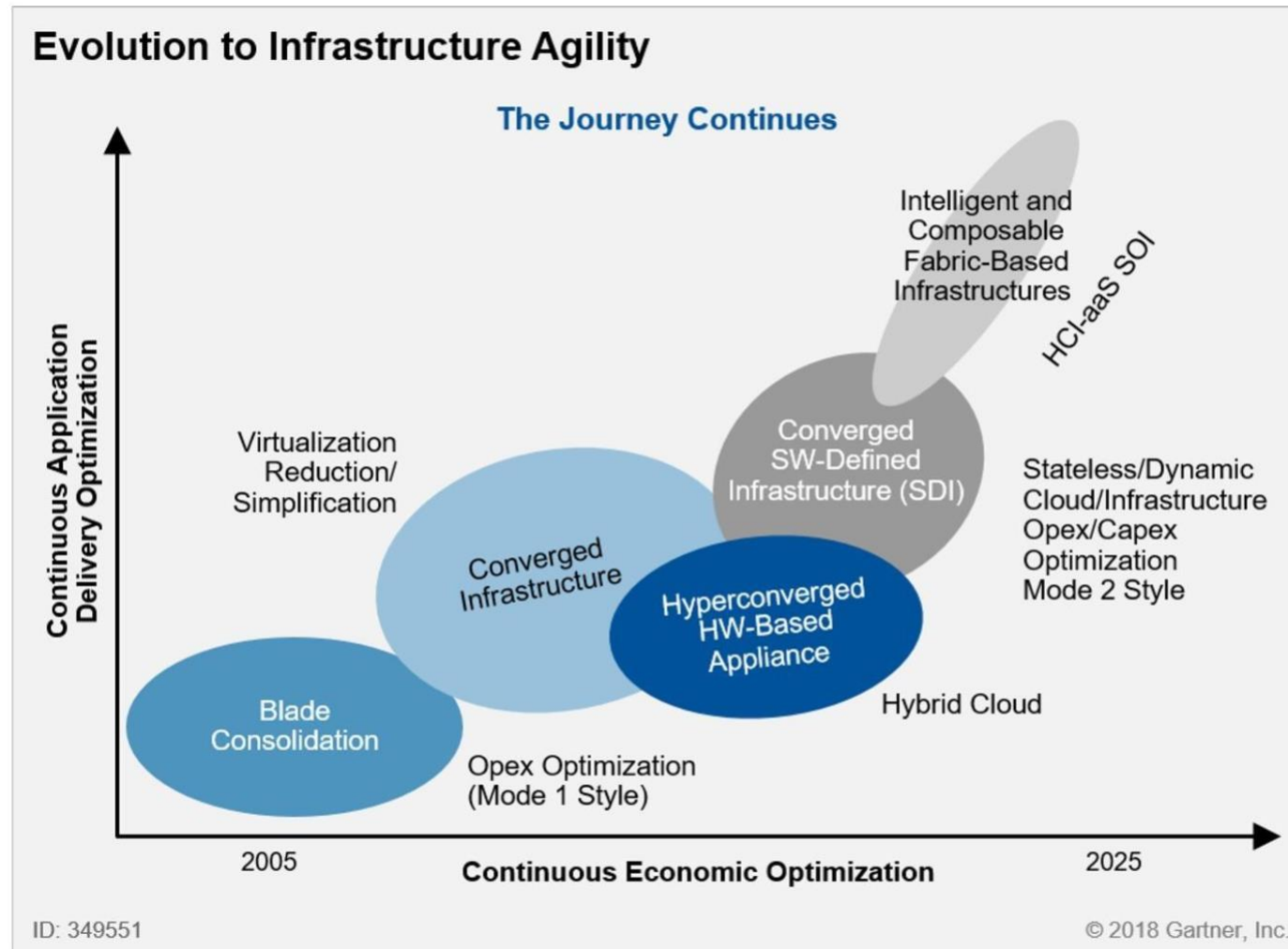
* HPE SimpliVity versus legacy IT



Hyper Converged Infrastructure (HCI)

HPE Simplivity 380

Evolution of Infrastructure



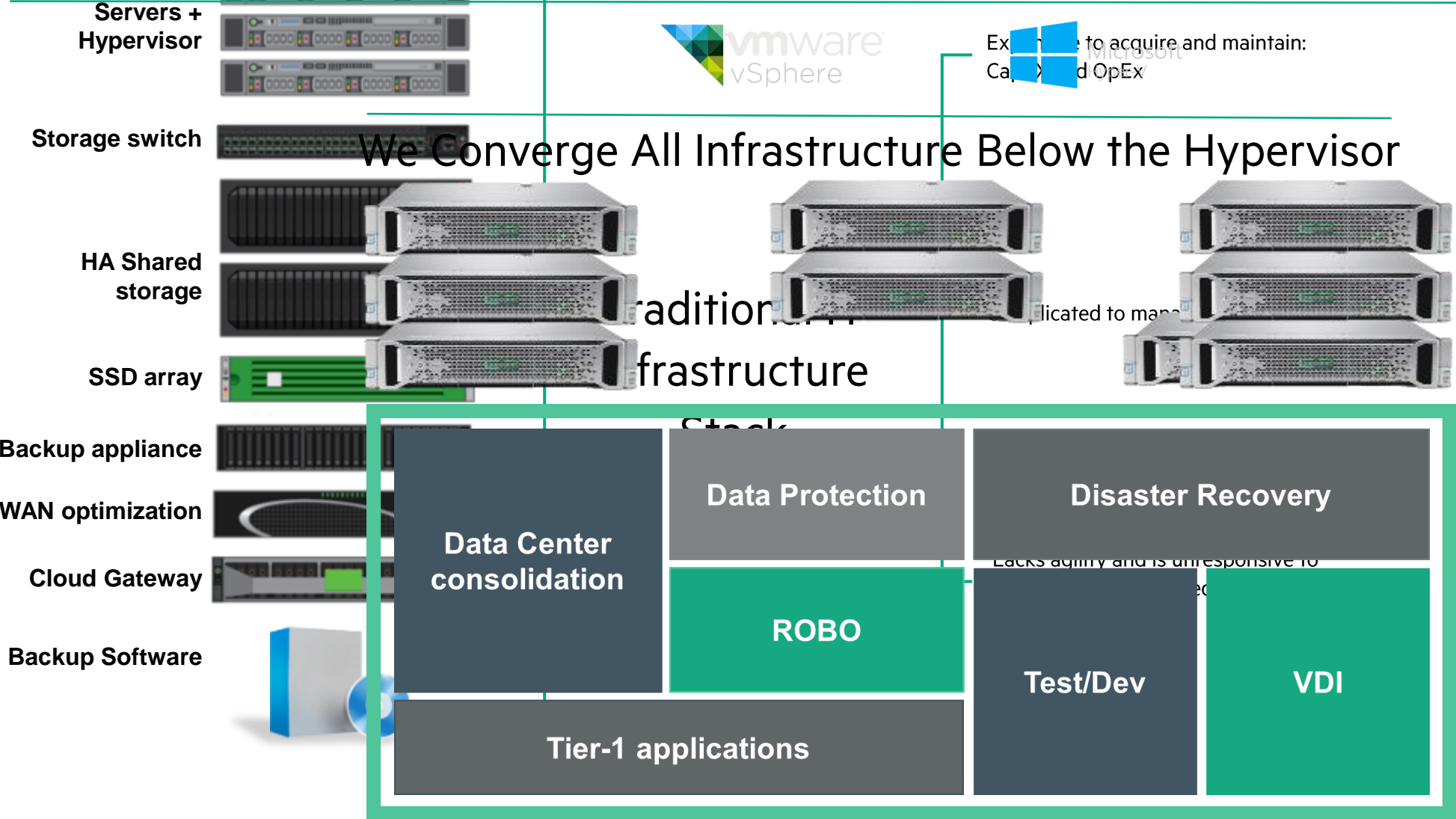
Hyper Converged Infrastructure vs Traditional Infrastructure



VS



Simplifying IT with HPE SimpliVity





HPE SimpLivity 380

- Simple Management

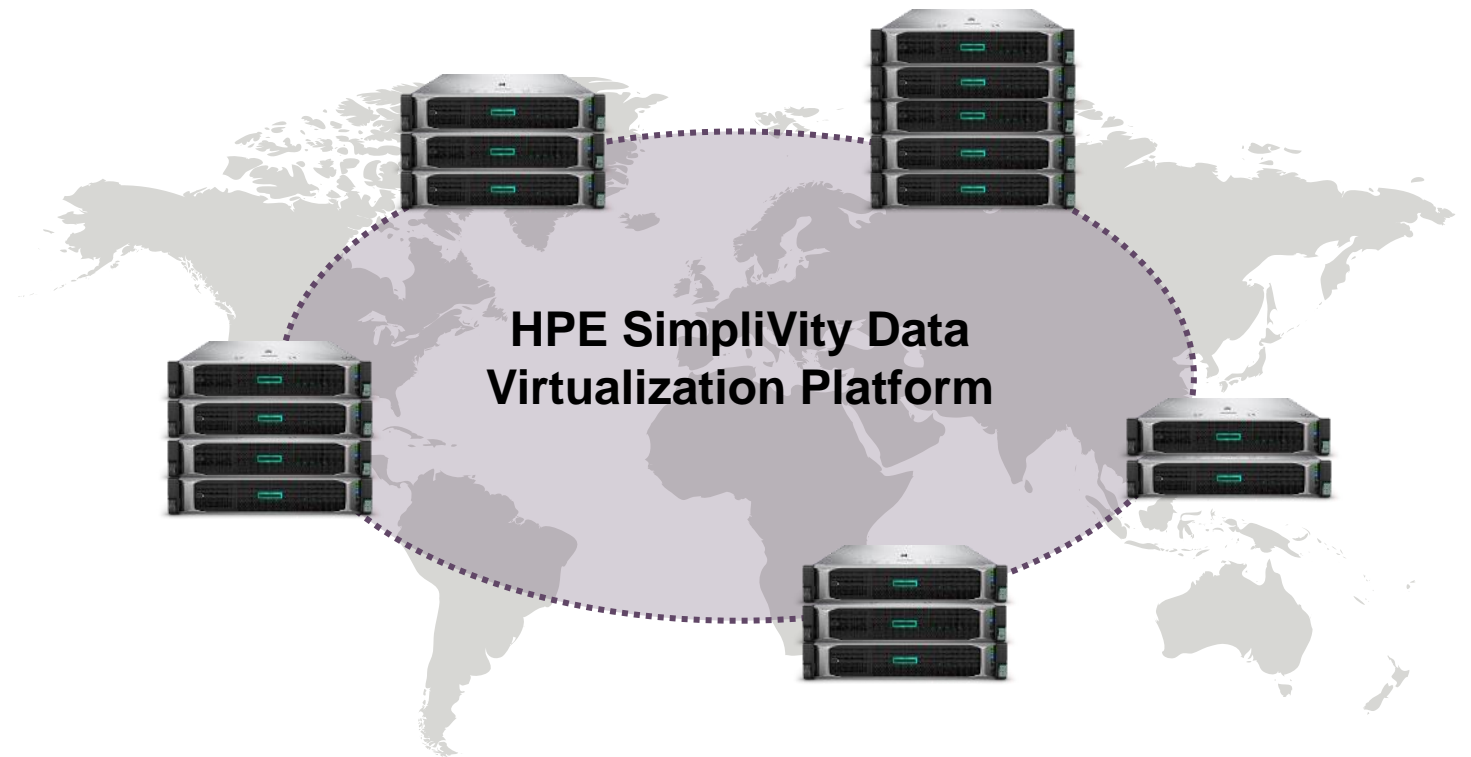
HPE SimpliVity Data Virtualization Platform

A modern data architecture

Global VM-Centric Management
and Mobility

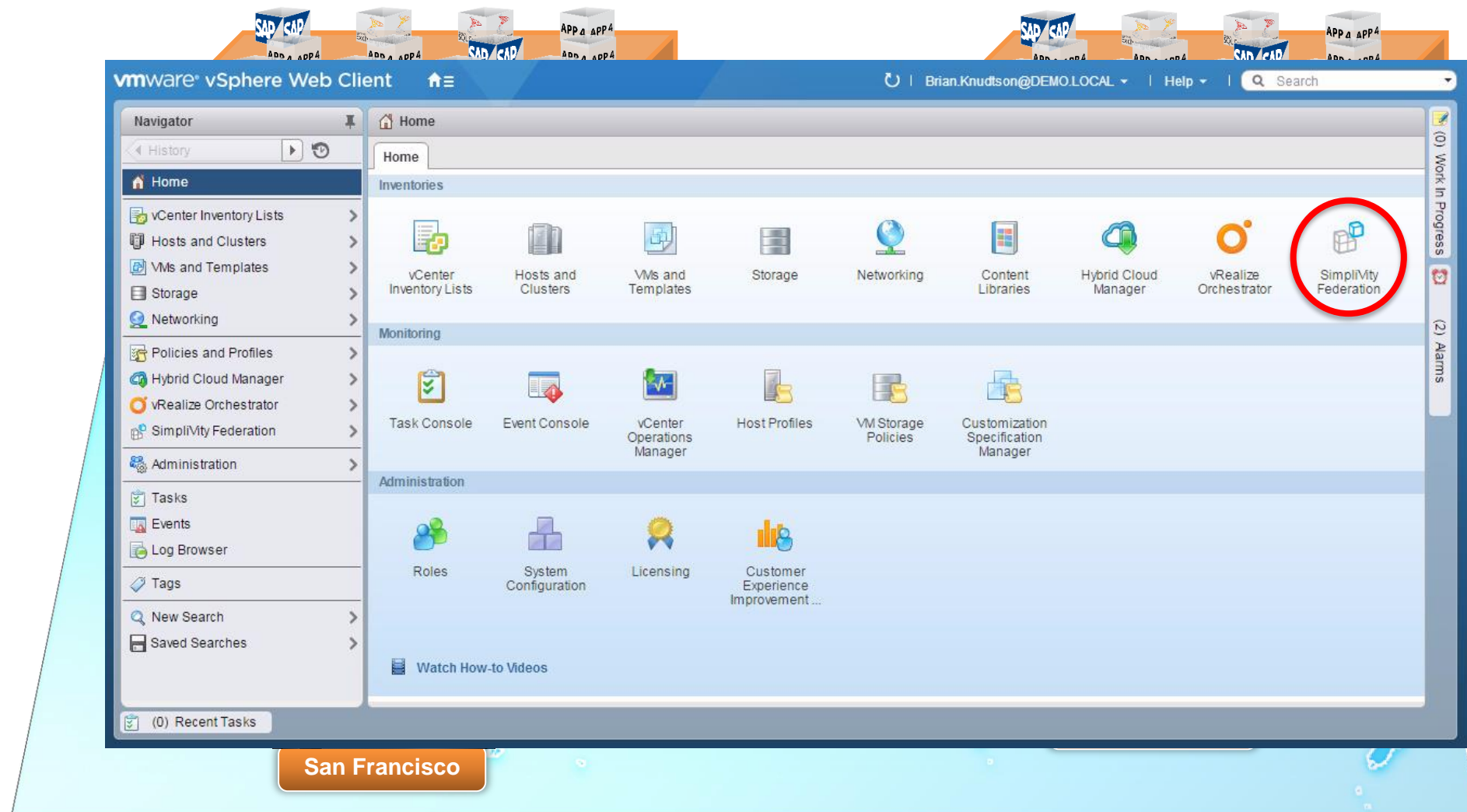
Built-in Resiliency, Backup,
and Disaster Recovery

Guaranteed Data Efficiency



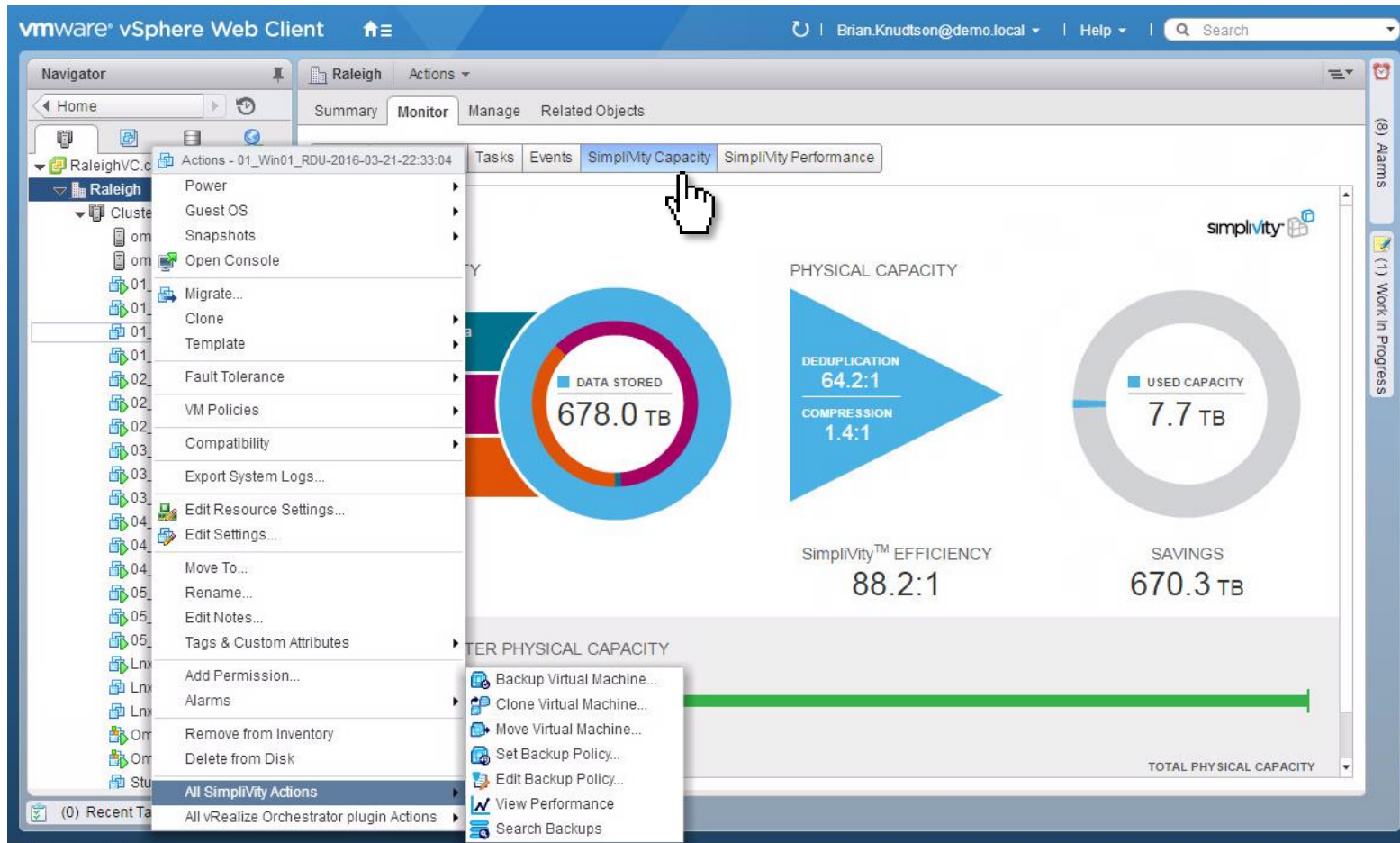
- Manage resources in a federated pool
- Seamlessly move data across sites
- Eliminate islands

Global Unified Management from Single Pane of Glass: VMware vCenter



VM-Centricity of All Operations for IT

Alignment of Data to VMs – Single Pane of Glass



- Solve the IO and data mobility challenge by only transferring unique data globally at VM-level granularity
- VM centricity of all operations
 - Backup
 - Clone
 - Move
 - Restore
- Easy to create workflows for protecting, restoring, creating multiple production dev/test copies, and recovering to disaster recovery site

SSD Life Healthy in Simplivity

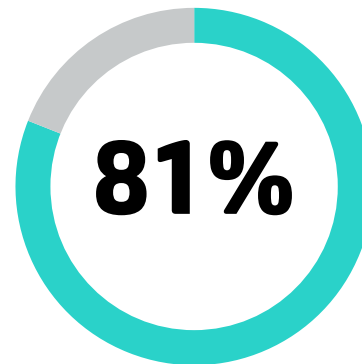
The screenshot shows the HPE Simplivity web interface. The left sidebar displays a tree view of the environment, including 'omnistack304251.clo'. The main panel displays 'HPE Simplivity Hardware' with a table of hardware components. The table includes columns for Component, Vendor, Model, Serial Number, Version, and Status. The status for several physical drives is highlighted in yellow, indicating 'Healthy, Life Remaining: 99% (SSD life Healthy)'.

Component	Vendor	Model	Serial Number	Version	Status
▼ HPE OmniStack™ System	HP	ProLiant DL380 Gen9	MXQ7160958	3.7.3.94	Healthy
HPE OmniStack™ Accelerator	Hewlett Packard Enterpris-	510-000003-016	TIA2-02164807282	3.7.2.6	Healthy
▼ Storage Adapter		AVAGO MegaRAID SAS 93	SK71267157	4.670.00-6500	Healthy
Battery Backup	LSI	N/A	1832	N/A	Healthy
▼ SSD Array	N/A	N/A	600605b00cd378020b607	N/A	Healthy
Cache State					Enabled
▼ Drive Set 0					Healthy
Physical Drive 1	HPE	MK001920GWCFB	S3BPNY0J305382	HPG0	Healthy, Life Remaining: 99% (SSD life Healthy)
Physical Drive 2	HPE	MK001920GWCFB	S3BPNY0J305742	HPG0	Healthy, Life Remaining: 99% (SSD life Healthy)
Physical Drive 3	HPE	MK001920GWCFB	S3BPNY0J305741	HPG0	Healthy, Life Remaining: 99% (SSD life Healthy)
Physical Drive 4	HPE	MK001920GWCFB	S3BPNY0J305380	HPG0	Healthy, Life Remaining: 99% (SSD life Healthy)
Physical Drive 5	HPE	MK001920GWCFB	S3BPNY0J928123	HPG0	Healthy, Life Remaining: 99% (SSD life Healthy)
▼ SSD Array	N/A	N/A	600605b00cd378020b607	N/A	Healthy
Cache State					Enabled

Increase admin speed and productivity

Global VM-centric management and mobility

- Policy-based, VM-centric management
- No LUNS, shares, or volumes
- Right-click operations
- Native tool integration
- Single view of all data centers and ROBOs
- Ability to rapidly move apps and data across sites



increase in time available to focus on apps and new projects



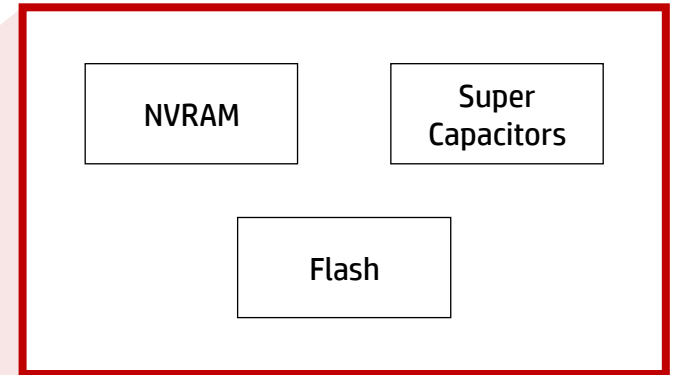
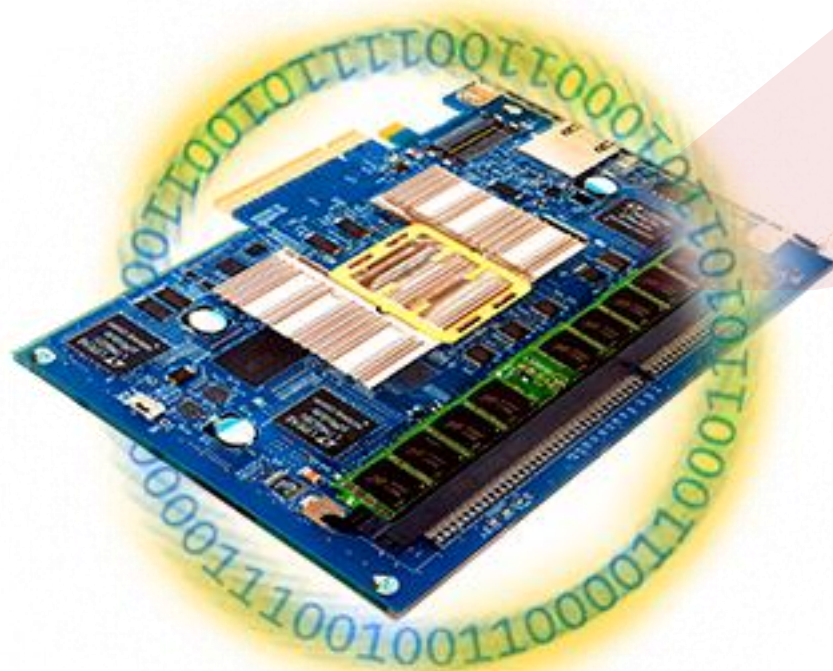


HPE SimpLivity 380

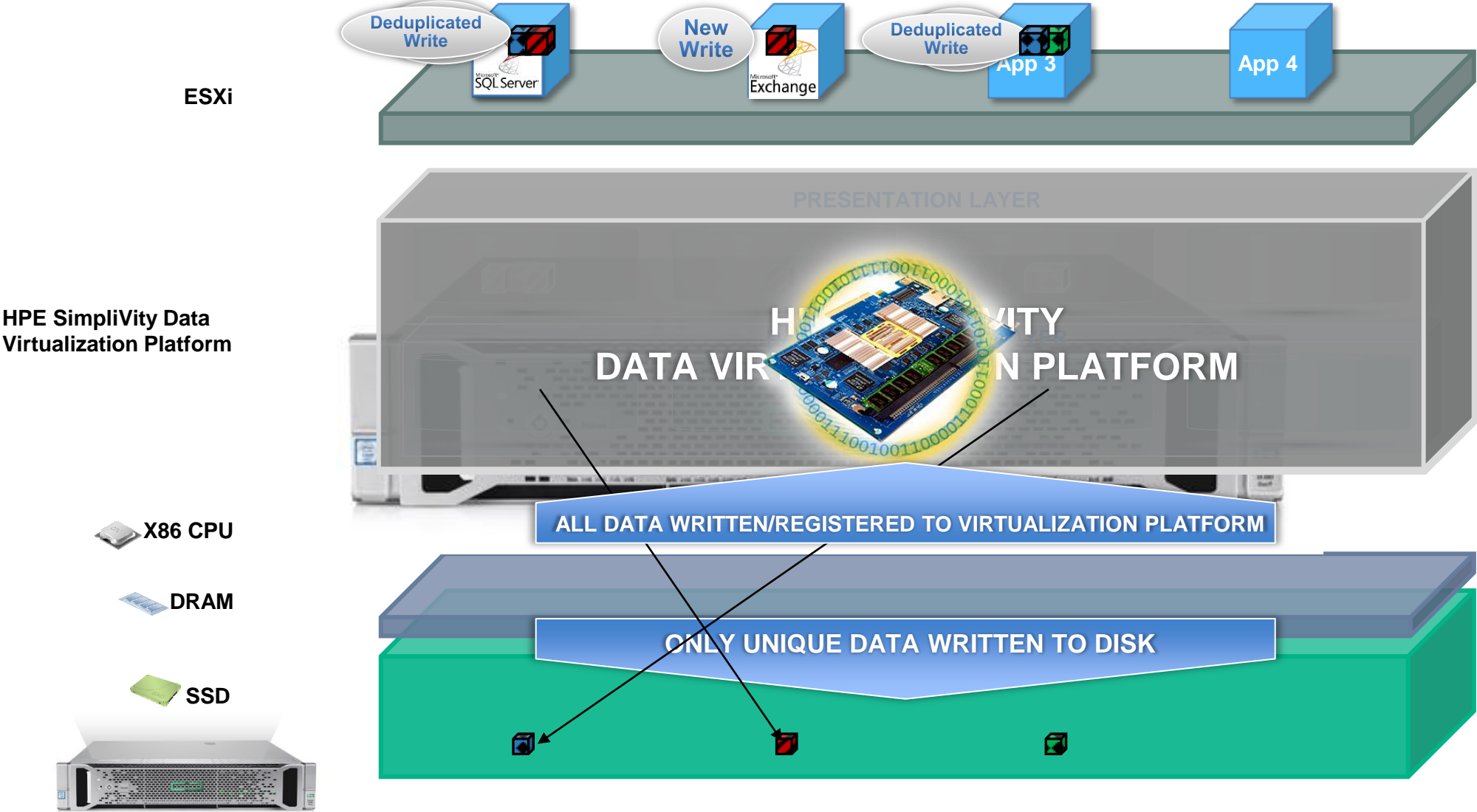
- Data efficiency**

OmniStack Accelerator Card (OAC)

1. PCI express card, purpose built by HPE SimpliVity
2. Offloads data optimization from CPU
3. FPGA optimized for dedupe/compression operations

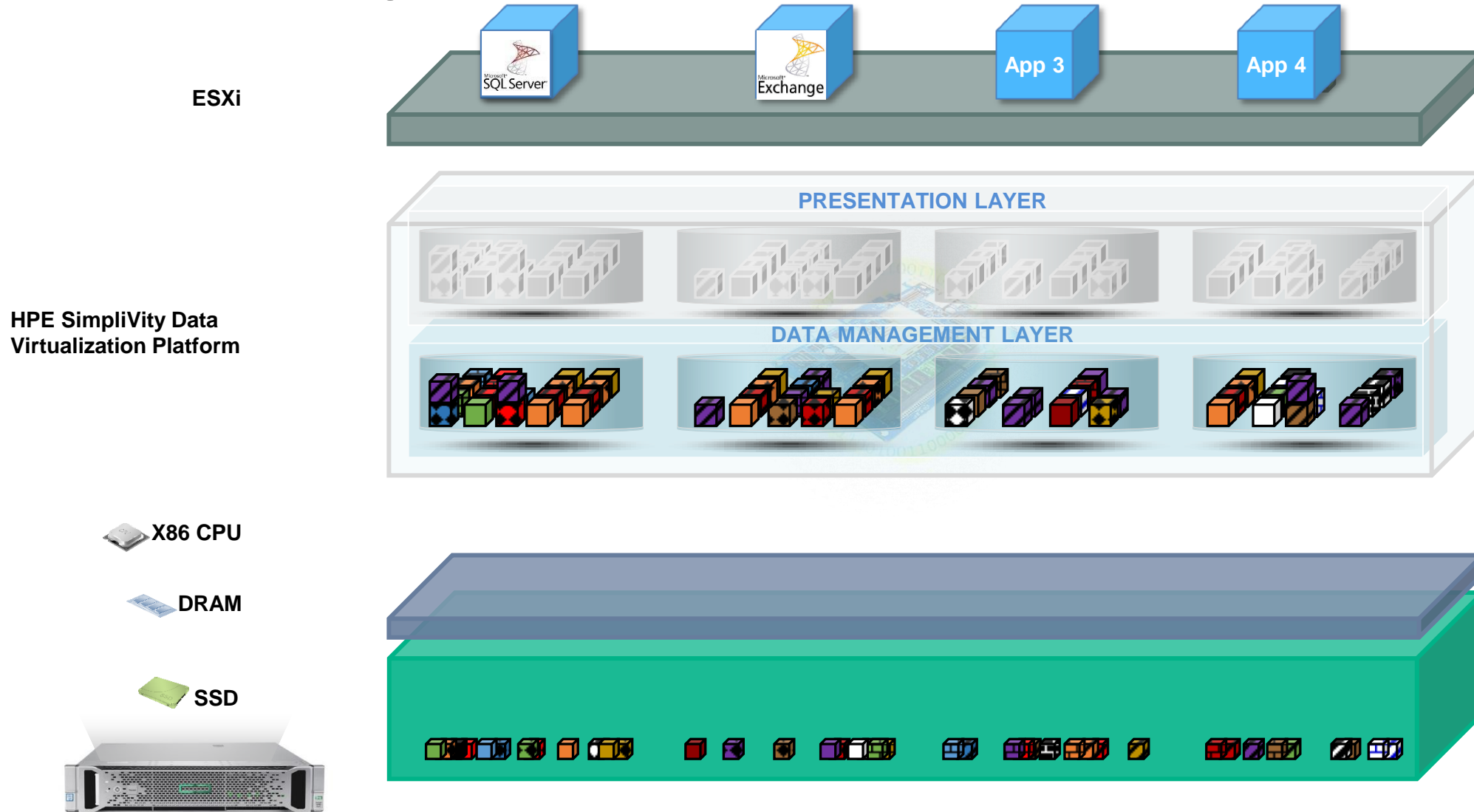


HPE SimpliVity's Data Virtualization Platform



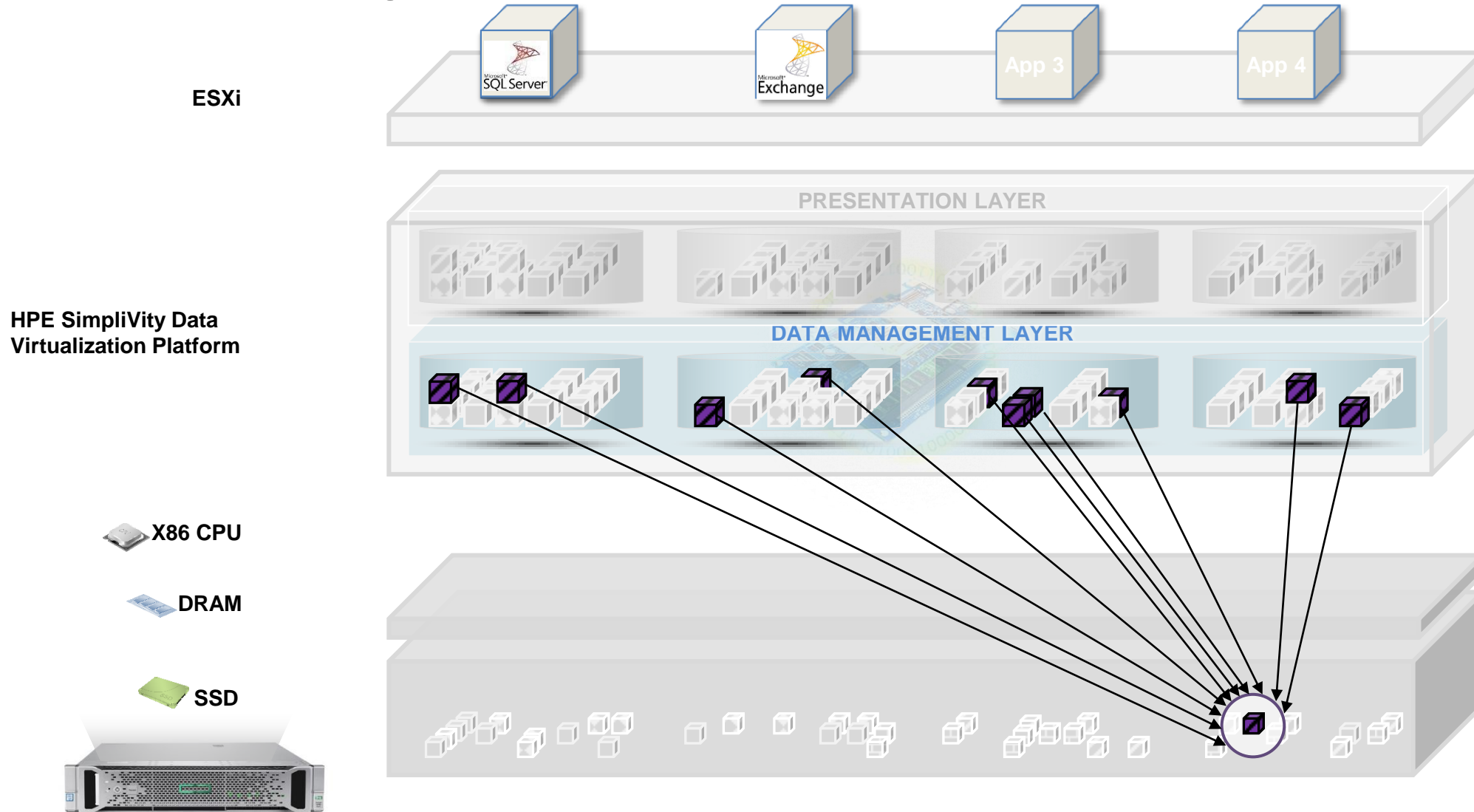
"The best IO is the one you don't have to do."

HPE SimpliVity's Data Virtualization Platform



"The best IO is the one you don't have to do."

HPE SimpliVity's Data Virtualization Platform



"The best IO is the one you don't have to do."

Data efficiency improves capacity, speeds recovery

Guaranteed data efficiency

- Always-on deduplication and compression
- All data at inception, globally
- Offloaded to OmniStack Accelerator Card
- Frees CPUs to run business workloads

52:1



Customers average **52:1 efficiency**
> 1/3rd surveyed achieve over 100:1¹

FORRESTER®



Save 90%
capacity across
storage and backup
combined²

¹ Reported in Forrester Total Economic Impact Study, 2017;
TechValidate survey data

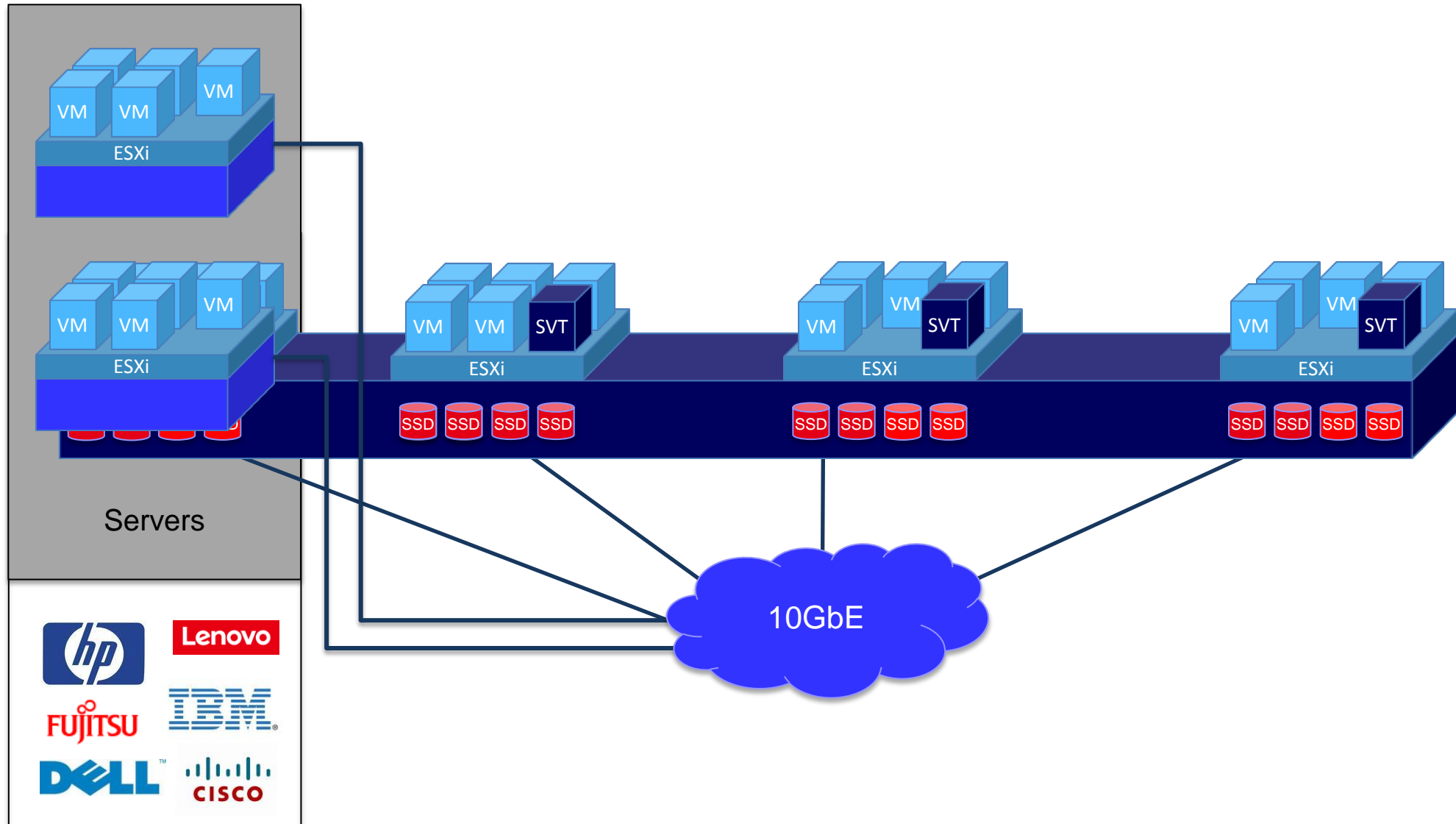
² HPE SimpliVity HyperGuarantee applies to current HPE SimpliVity and HPE
OmniStack products and the new HPE SimpliVity 380 product.



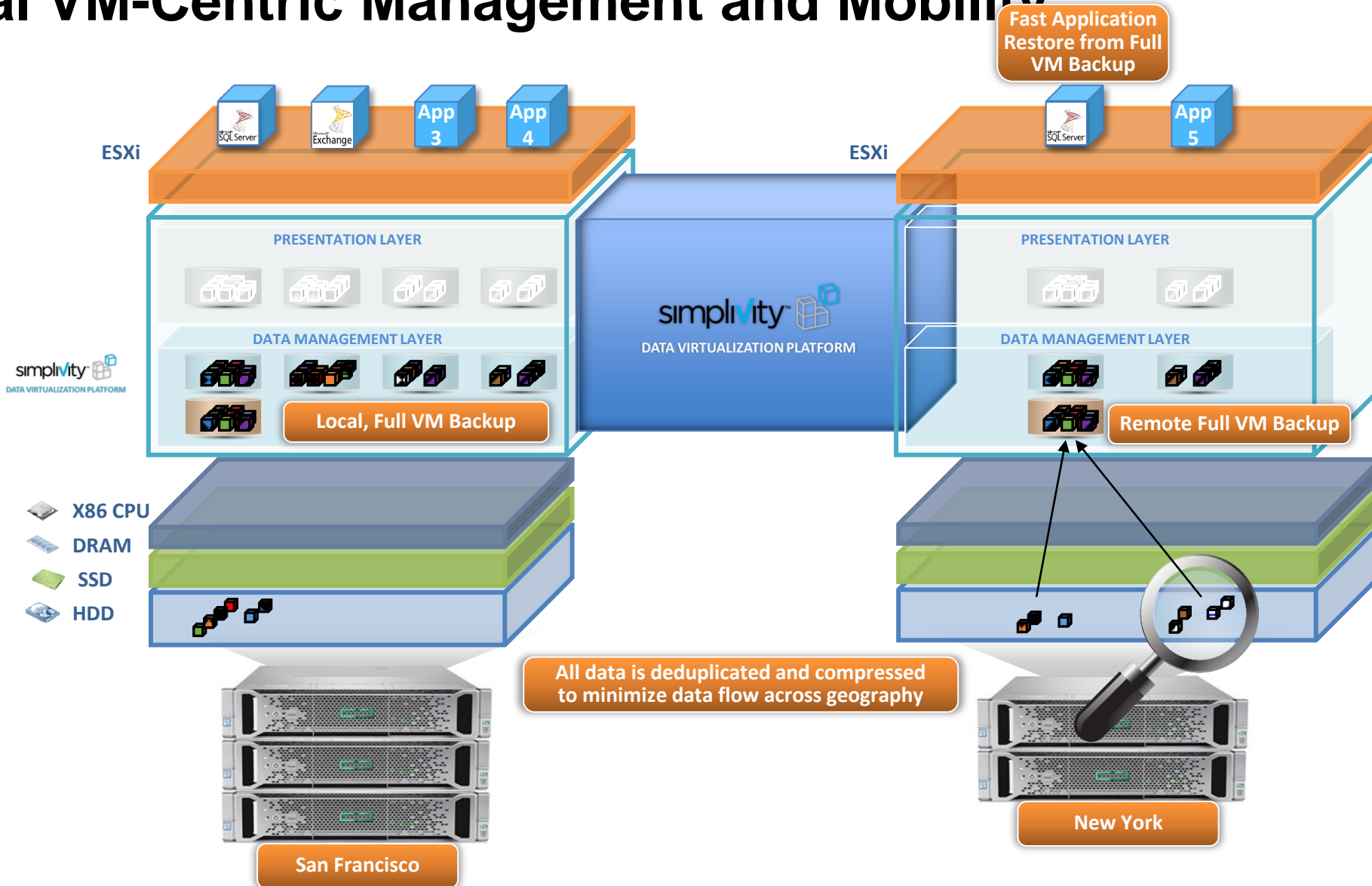
HPE SimpLivity 380

- Resiliency and Reliability

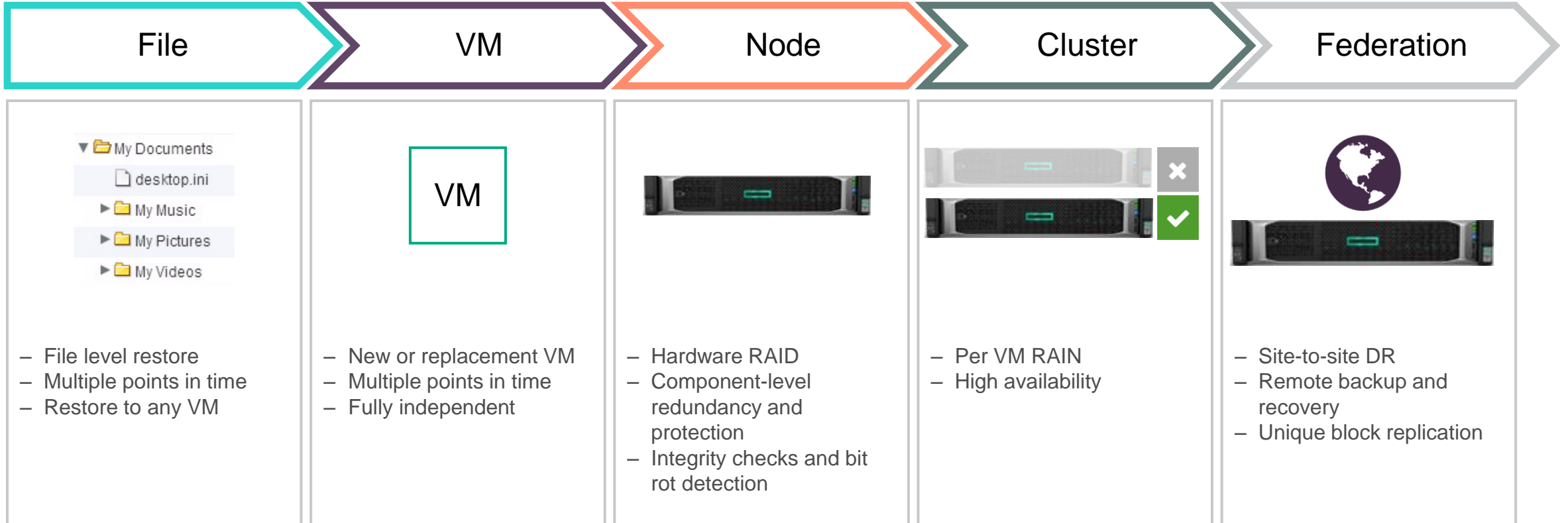
Scale-Out and Open Architecture



Global VM-Centric Management and Mobility



Maximize uptime and prevent data loss



Efficiency gains from built-in resiliency, back-up and disaster recovery

Built-in resiliency, backup, and disaster recovery

- Full, logical backups with near-zero overhead
- Granular RTOs and RPOs from hours to minutes
- Policy-based automation for backups and retention
- Simple, affordable offsite DR
- RAIN and RAID for superior built-in resiliency

70%

improvement in backup/recovery and DR reported by HPE SimpliVity customers (IDC)¹



57%

of HPE SimpliVity customers **reduced recovery times** from days or hours to minutes (TechValidate)²



<1

Minute to backup or restore a 1 TB VM

¹IDC white paper, "[HPE SimpliVity Hyperconvergence Drives Operational Efficiency and Customers are Benefiting](#)," June 2017

²[2017 TechValidate survey of HPE SimpliVity infrastructure customers](#)

Built-in backup and disaster recovery reduces costs and risk



+ third-party backup for operational recovery

veeam

DELL EMC
DATA DOMAIN

DELL EMC
AVAMAR

COMMVAULT

VERITAS

+ replication and disaster recovery automation

vmware
Site Recovery Manager

Zerto

+ WAN optimization

riverbed

OR

HPE SimpliVity





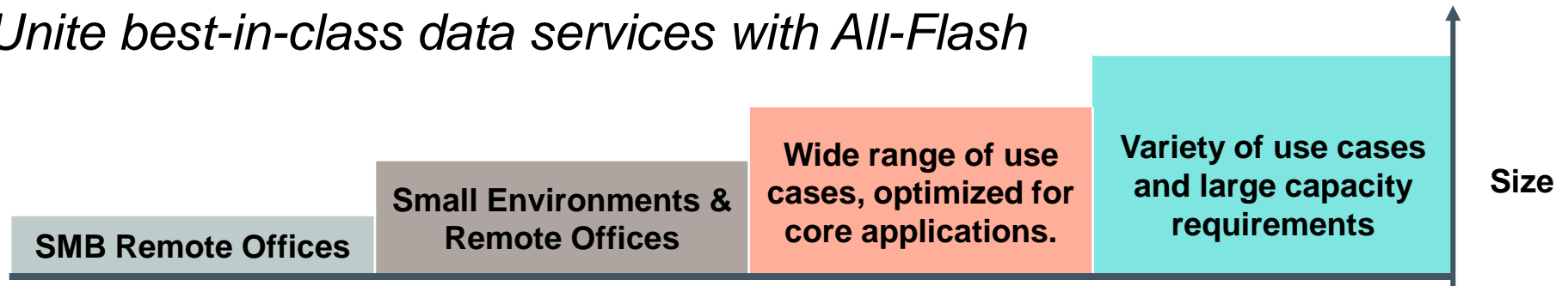
HPE SimpLivity 380

- Roadmap

HPE SimpliVity 380: Most powerful hyperconverged All-Flash portfolio



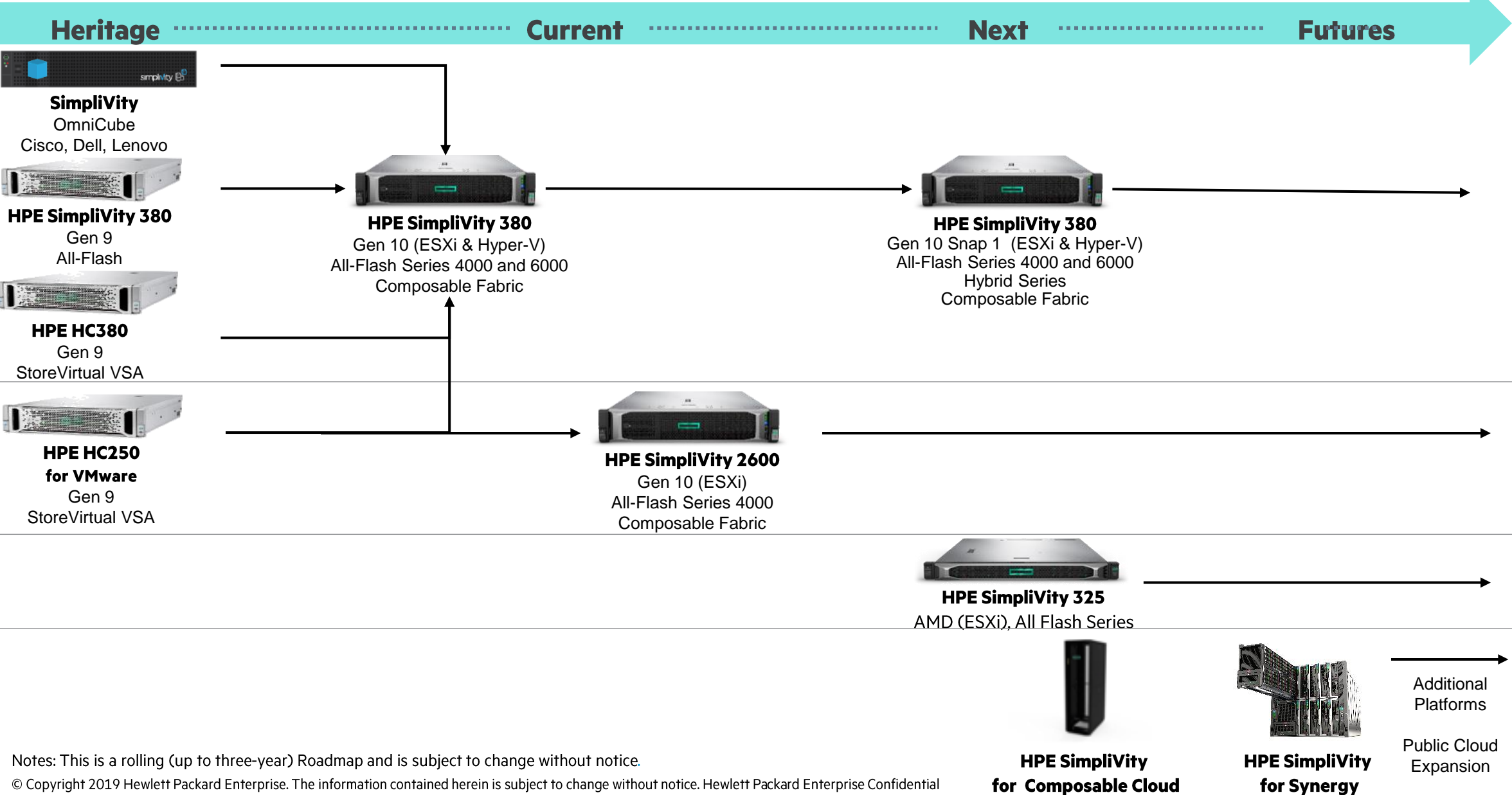
Unite best-in-class data services with All-Flash



	Extra Small	Small	Medium	Large
CPU	Latest Intel Xeon Scalable Processor Family spanning single, dual socket and multi-cores			
Memory	HPE Smart Memory DDR4 spanning various configurations up to 1436 GB			
Effective Capacity	3 – 6 TB	6 – 12 TB	12 - 25 TB	20 - 40 TB
Storage Configurations*	5 x 960 GB SSD RAID-5	5 x 1.92 TB SSD RAID-5	9 x 1.92 TB SSD RAID-6	12 x 1.92 TB SSD RAID-6
New Common Options	GPU Accelerator for VDI, End User Computing Data at Rest Encryption for Data Privacy RapidDR for DR automation FlexCapacity consumption options			
Common Features	Accelerated Inline Dedupe/Compression, High Availability, Redundant Power, VM-centric Policy-based Backup/Recovery/DR, Replication, VM Mobility, Integrated Management via hypervisor (VMware, MSFT SCVMM)			

* Available in two versions, 6000-series and 4000-series
 6000-series is best for high performance, IO intensive mixed workloads
 4000-series is best for typical workloads (heavy reads/lower ratio of writes)
 at lower cost than the 6000-series.

HPE Hyperconverged Platform Roadmap



HPE Hyperconverged Software Roadmap

Current



Key Features

1. Comprehensive REST API
2. Stretch Cluster
3. Policy-based VM centric management
4. Integrated inline compression and deduplication
5. Built-in enterprise grade resiliency
6. Self service Deployment and Upgrade
7. Built-in data protection including app aware SQL backups
8. DR Automation with RapidDR
9. Multi Hypervisor (ESXi, Hyper-V)
10. Orchestrated HPE SimpliVity and Hypervisor Update
11. Increased Cluster (16 nodes) and Federation (96 nodes) Scale
12. HPE SimpliVity with Composable Fabric
13. Support for ESXi 6.7 U1
14. vCenter HTML5 Plugin
15. Parallel Deployment and Upgrade
16. Storage capacity and CPU expansion (HPE SimpliVity 380)

Next



Key Features

1. HPE InfoSight Integration
2. Orchestrated Firmware Update
3. VDI Instant Clone
4. Additional Hyper-V node sizes and deployment improvements
5. 4 nodes cluster and 16 node Federation for Hyper-V
6. Hyper-V Support for RapidDR
7. Air-gapped Backup (StoreOnce)
8. Role Based Access Control
9. Multi GPU Support
10. HPE SimpliVity Hybrid Nodes

Future



Key Features

1. Extended HPE Platform Support (Composable Cloud, Synergy, Edge, etc.)
2. Next Gen OmniStack Accelerator card
3. Larger Federation Scale
4. Unattended Upgrade
5. Multi Hypervisor Federation
6. Dynamic Resource Balancing across Hypervisors
7. NVMe Storage Options
8. OneSphere Support
9. Air-gapped backups to cloud
10. Public Cloud Integration
11. Additional Hypervisor Support (KVM)
12. Native container support on HPE SimpliVity
13. Additional Storage Protocols
 - a. Persistent Container Storage
 - b. Block Storage
 - c. NAS
 - d. Object Storage

Notes: This is a rolling (up to three-year) Roadmap and is subject to change without notice.

© Copyright 2019 Hewlett Packard Enterprise. The information contained herein is subject to change without notice. Hewlett Packard Enterprise Confidential

Summary

- SVT 特色:
 - 單一窗口, HPE 支援 SimpLivity HW, SW, VM OEM service
 - 單一界面, vCenter 管理多個 data center, 包含VM, HW
 - 高效率 Storage, All Flash
 - 提昇SSD價值/per G, 內建 in-line dedup, compression,
 - 資產活化, 可外接compute nodes/storage, 可擴充 CPU/RAM/HDD
 - 減少資料損失, 1分鐘內執行完整備份1TB VM, 讓RPO<=1min
 - 內建備份/異地備援/本地雙活功能

主要銷售對象:

- 傳統架構
- 中小企業
- ROBO
- SWD 替代方案
- 機房空間有限



Thank you